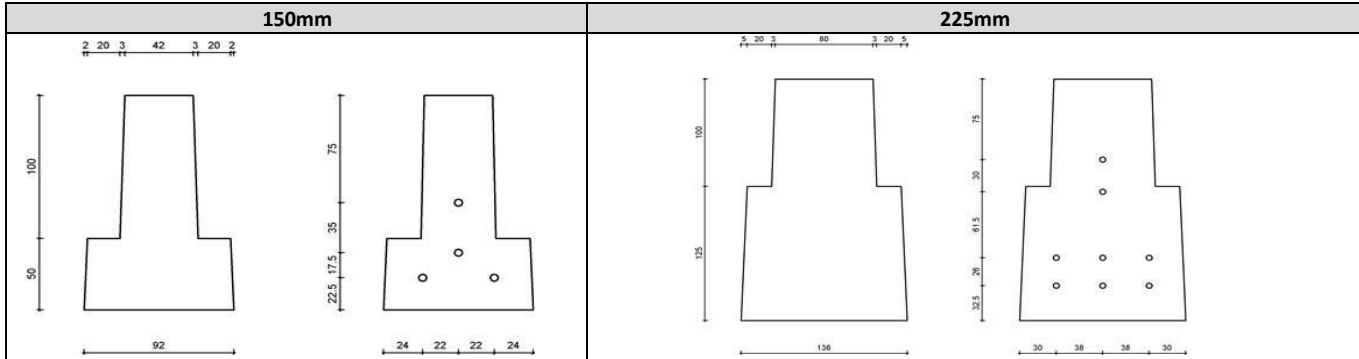


Steel	150mm	225mm
Steel yield strength of wire, f_{pk}	1770 N/mm ²	Same
Young's modulus of wire, E_p	205 kN/mm ²	Same
Diameter of wires in each row (mm)	5 mm	Same

Concrete	150mm	225mm
Transfer mean compressive cube strength, $f_{cm}(t)$	40 N/mm ²	30 N/mm ²
Concrete cylinder strength at 28 days f_{ck}	55 N/mm ²	Same
Young's modulus at transfer, $E_{cm}(t)$	33.3 kN/mm ²	Same
Young's modulus at 28 days (gravel aggregate), E_{cm}	38.2 kN/mm ²	Same



	Constants	
	150mm	225mm
Cross-sectional area A_c (mm ²)	9000	24675
Height to centroid, y_b (mm)	61.85	99.61
Breadth at top (mm)	42	80
Width (mm)	92	136
Depth (mm)	150	225
Second moment of area $I_{x-x} \times 10^6$ (mm ⁴)	17.03	98.18
Section modulus top, Z_t (mm ³)	193170	985589
Section modulus bottom, Z_b (mm ³)	275294	782977

	150mm	225mm
Servicability Limit State		
M_{sR} for exposure XC1 (kNm)	5.309 kNm	16.058 kNm
M_{sR} for exposure XC3 (kNm)	4.307 kNm	12.241 kNm
Ultimate Limit State		
Ultimate moment of resistance, M_{Rd} (kNm)	7.33 kNm	24.10 kNm
Ultimate shear capacity, $V_{Rd,c}$ (kN)	12.98 kN	33.18 kN

Declaration of Performance		
No.	2797 CPR 593841	
Identification Code	150 mm Deep	225 mm Deep
Intended Use	Flooring	
Manufacturer	Litecast Limited, Pool Road, Nuneaton, CV10 9AQ	
Authorised Representative	Not applicable	
Relevant Harmonised Standard	BS EN 15037-1:2008	

Essential Requirements (not covered above)	Declared Performance	
Surface characteristics	Not described	Same
Conditions for durability (BS EN 13369:2018 Annex A)	Condition C - moderate - XC2/3	Same
Resistance to fire (for load bearing capacity) (minutes)	Nil using single beams R60 using double beams	R60 using single beams R90 using double beams

The performance of the product identified above is in conformity with the declared performance above.

The declaration of performance is issued under the sole responsibility of the manufacturer identified above.

Signed on behalf of the manufacturer by:

Dr. Kim S Elliott

Structural Engineer

(Name and function)

02/01/2020

(Place and date of issue)

Signature

L12 1.0.0