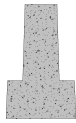


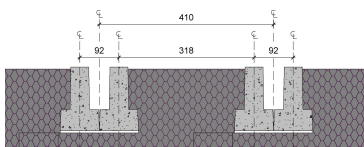
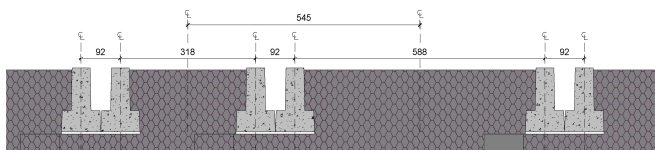
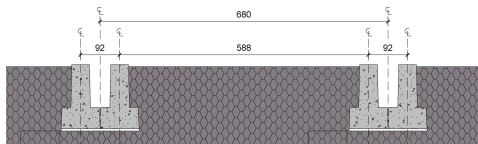
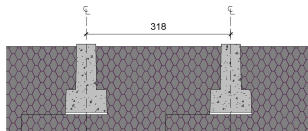
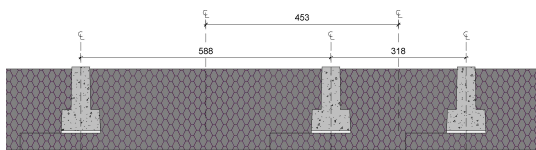
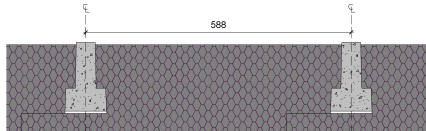
# TECHNICAL DOCUMENT

## 150mm XT EPS LOADSPAN



Beam Reference	Depth	Breadth At Bottom	Breadth At Top	Ledge
L13	150 mm	92 mm	42 mm	20 mm
Depth Of Flange	Bottom Splay	Up Splay	Weight	Weight
50 mm	2 mm	3 mm	25 kg/m	0.212 kN/m

The below tables are for informative purposes only, for further information please contact Litecast on 02746 356161, alternatively email [sales@litecast.co.uk](mailto:sales@litecast.co.uk)



Configuration	S588		EPS Density		17 kg/m³	
Topping	1.725 kN/m²		Partitions		Nil	
Imposed Load (kN/m²)	1.5	2	2.5	3	4	5
Max. Clear Span (mm)	4111	3846	3626	3439	3136	2900

Configuration	S453		EPS Density		17 kg/m³	
Topping	1.725 kN/m²		Partitions		Nil	
Imposed Load (kN/m²)	1.5	2	2.5	3	4	5
Max. Clear Span (mm)	4651	4358	4113	3905	3566	3301

Configuration	S318		EPS Density		17 kg/m³	
Topping	1.725 kN/m²		Partitions		Nil	
Imposed Load (kN/m²)	1.5	2	2.5	3	4	5
Max. Clear Span (mm)	5300*	5102	4828	4593	4209	3906

\*Beams are not manufactured over 5.5m in length, max clear span has been adjusted to suit based on 100mm of bearing at each end.

bearing at each end.						
Configuration	D680		EPS Density		17 kg/m³	
Topping	1.725 kN/m²		Partitions		Nil	
Imposed Load (kN/m²)	1.5	2	2.5	3	4	5
Max. Clear Span (mm)	5163	4862	4607	4388	4028	3742

Configuration	D545		EPS Density		17 kg/m³	
Topping	1.725 kN/m²		Partitions		Nil	
Imposed Load (kN/m²)	1.5	2	2.5	3	4	5
Max. Clear Span (mm)	5300*	5300*	5079	4844	4457	4149

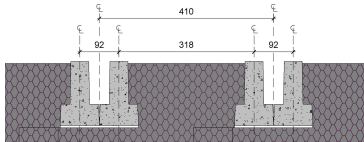
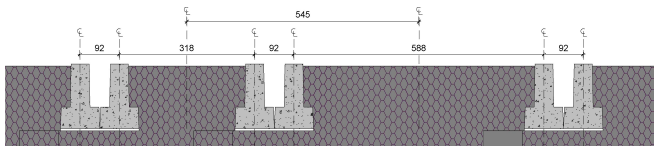
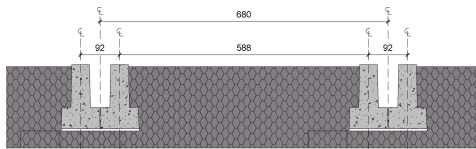
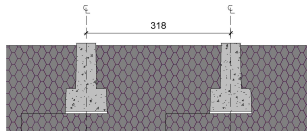
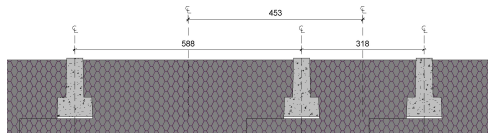
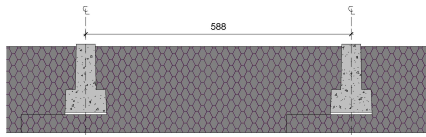
\*Beams are not manufactured over 5.5m in length, max clear span has been adjusted to suit based on 100mm of bearing at each end.

bearing at each end.						
Configuration	D410		EPS Density		17 kg/m³	
Topping	1.725 kN/m²		Partitions		Nil	
Imposed Load (kN/m²)	1.5	2	2.5	3	4	5
Max. Clear Span (mm)	5300*	5300*	5300*	5300*	5038	4704

\*Beams are not manufactured over 5.5m in length, max clear span has been adjusted to suit based on 100mm of bearing at each end.

# TECHNICAL DOCUMENT

## 150mm XT EPS LOADSPAN



Configuration	S588		EPS Density		17 kg/m <sup>3</sup>	
Topping	1.725 kN/m <sup>2</sup>		Partitions		0.5 kN/m <sup>2</sup>	
Imposed Load (kN/m <sup>2</sup> )	1.5	2	2.5	3	4	5
Max. Clear Span (mm)	3920	3688	3492	3324	3047	2829

Configuration	S453		EPS Density		17 kg/m <sup>3</sup>	
Topping	1.725 kN/m <sup>2</sup>		Partitions		0.5 kN/m <sup>2</sup>	
Imposed Load (kN/m <sup>2</sup> )	1.5	2	2.5	3	4	5
Max. Clear Span (mm)	4440	4182	3964	3776	3467	3221

Configuration	S318		EPS Density		17 kg/m <sup>3</sup>	
Topping	1.725 kN/m <sup>2</sup>		Partitions		0.5 kN/m <sup>2</sup>	
Imposed Load (kN/m <sup>2</sup> )	1.5	2	2.5	3	4	5
Max. Clear Span (mm)	5193	4905	4660	4447	4095	3814

Configuration	D680		EPS Density		17 kg/m <sup>3</sup>	
Topping	1.725 kN/m <sup>2</sup>		Partitions		0.5 kN/m <sup>2</sup>	
Imposed Load (kN/m <sup>2</sup> )	1.5	2	2.5	3	4	5
Max. Clear Span (mm)	4947	4679	4450	4251	3921	3656

Configuration	D545		EPS Density		17 kg/m <sup>3</sup>	
Topping	1.725 kN/m <sup>2</sup>		Partitions		0.5 kN/m <sup>2</sup>	
Imposed Load (kN/m <sup>2</sup> )	1.5	2	2.5	3	4	5
Max. Clear Span (mm)	5300*	5156	4911	4698	4342	4055

\*Beams are not manufactured over 5.5m in length, max clear span has been adjusted to suit based on 100mm of bearing at each end.

Configuration	D410		EPS Density		17 kg/m <sup>3</sup>	
Topping	1.725 kN/m <sup>2</sup>		Partitions		0.5 kN/m <sup>2</sup>	
Imposed Load (kN/m <sup>2</sup> )	1.5	2	2.5	3	4	5
Max. Clear Span (mm)	5300*	5300*	5300*	5296	4913	4601

\*Beams are not manufactured over 5.5m in length, max clear span has been adjusted to suit based on 100mm of bearing at each end.