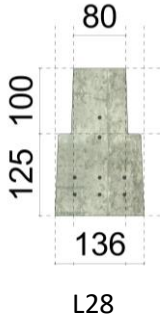


Litecast Beam & Block

LOADSPAN TABLE – 225mm BEAM

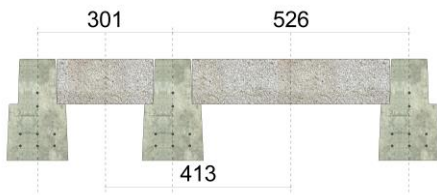


Beam Reference	Height (mm)	Width (mm)	Weight (kg/m)	Weight (kN/m)
L28	225	136	69	0.676

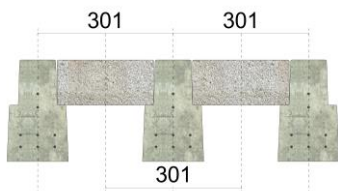
The loadspan tables shown below are for illustrative purposes only. Beams used in conjunction with 1950kg/m³ dense blocks. For further information please contact Litecast Homefloors on: 02476 356 161



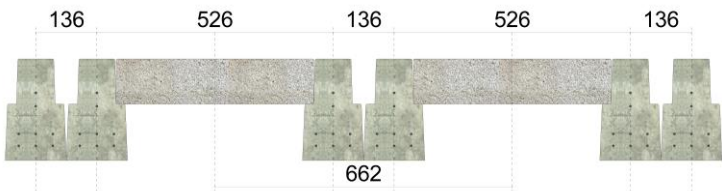
S526	Finishes = 1.425 kN/m ²					
	Imposed load kN/m ²					
Self Weight	1.5	2	2.5	3	4	5
kN/m ²	Maximum Clear Span (m)					
2.71	6.59	6.31	6.07	5.85	5.47	5.16



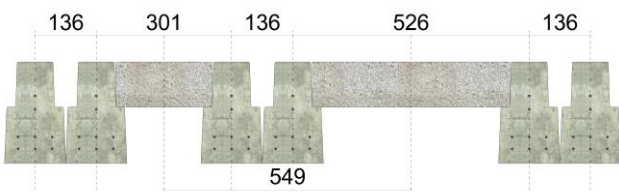
S413	Finishes = 1.425 kN/m ²					
	Imposed load kN/m ²					
Self Weight	1.5	2	2.5	3	4	5
kN/m ²	Maximum Clear Span (m)					
2.93	7.30	7.01	6.75	6.51	6.11	5.77



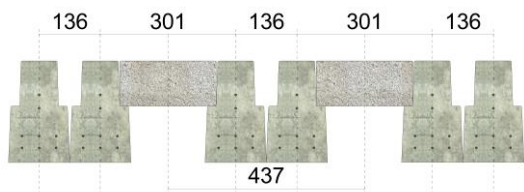
S301	Finishes = 1.425 kN/m ²					
	Imposed load kN/m ²					
Self Weight	1.5	2	2.5	3	4	5
kN/m ²	Maximum Clear Span (m)					
3.13	8.313	7.99	7.71	7.46	7.02	6.64



D662	Finishes = 1.425 kN/m ²					
	Imposed load kN/m ²					
Self Weight	1.5	2	2.5	3	4	5
kN/m ²	Maximum Clear Span (m)					
3.23	7.97	7.66	7.39	7.14	6.71	6.35



D549	Finishes = 1.425 kN/m ²					
	Imposed load kN/m ²					
Self Weight	1.5	2	2.5	3	4	5
kN/m ²	Maximum Clear Span (m)					
3.51	8.57	8.25	7.97	7.72	7.27	6.89



D437	Finishes = 1.425 kN/m ²					
	Imposed load kN/m ²					
Self Weight	1.5	2	2.5	3	4	5
kN/m ²	Maximum Clear Span (m)					
3.92	9.33	9.00	8.71	8.44	7.98	7.58